

## CASE STUDY

**Pyplok**<sup>™</sup>



**INSTALLATION DATE:**

January 2023

**END USER:**

Equinor – Eldfisk S Platform  
Delivery of parts and installation  
done by Hydra Pipe AS

**LINES SIZES AND MATERIAL:**

4" SCH10, Super Duplex, ~5 Bar

**SYSTEM MEDIUM:**

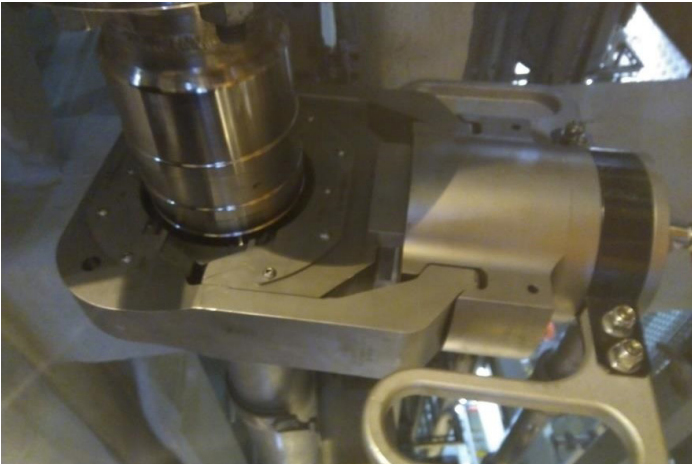
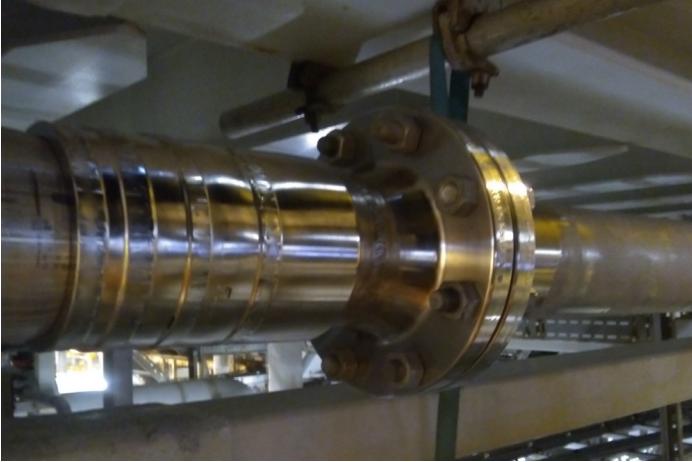
Super Duplex Drain Line

**LOCATION:**

North Sea – Ekofisk Field, Norway

**SPECIAL COMMENTS OR NOTES:**

Tie-in on 4" sch 10S Super Duplex drain line. Cut into a 4" SCH10S Duplex Drain line to tie in with a pre-fabricated 4" super duplex pipe with a 2" tee for additional drain. Pipe was cold cut, deburred and cleaned around the swage area with sandpaper. The Pyplok<sup>®</sup> was set in place after marking the pipe, and the pre-fabricated pipe was bolted onto the pipe ends with Pyplok<sup>®</sup> to ensure right adjustment on the 2" drain tee. The Pyplok<sup>®</sup> tool was energized with a pneumatic pump and within 12 minutes the 4" Super Duplex connection was completed with no heat, sparks or disturbance to the surrounding areas of the operating the platform.



**Pyplok™**

[pyplok.com](http://pyplok.com)



hydra pipe

**100%**  
lekkasjesikker  
remontering

Ta ansvar for  
hver dråpe olje

**Hydra Pipe AS**  
Sjukenesstranda 41 B  
6037 Eidsnes  
NORWAY

+47 70 17 72 00